



Nevenka Mavrodaris

Non-Principal Property Practitioner
Registered with PPRA
(FFC 202 221 247 1)
+27 82 5007 617

nevenka@therealtyboutique.com

Contact Head Office

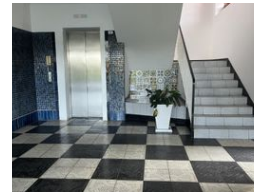
084 6939999

Shop 46 - Protea Mall
1 Lighthouse Road
Umhlanga Rocks



SOLE MANDATE

Web Ref RL3341



R1,630,000

🛏 1 🚿 1

Monthly Bond Repayment R16,824.67

Calculated over 20 years at 11% with no deposit.

Transfer Costs R51,853.00

Bond Costs R30,875.00

These calculations are only a guide. Please ask your conveyancer for exact calculations.

Monthly Levy R2,810

Monthly Rates R2,875

PEACE, QUIET, GREAT LOCATION

Nestled in a well-maintained and secure apartment block, this spacious 1 bedroom gem offers the perfect blend of coastal living and modern convenience. Located on a peaceful road, just minutes from the beach and the vibrant Umhlanga Village, this is an opportunity not to be missed!

Features:

- Spacious Living - Open-plan fitted granite kitchen flows seamlessly into a generous living area with aircon.
- 1 Large Bedroom - Comfortable and airy, perfect for relaxation with aircon.
- Work-From-Home Space - Enclosed balcony ideal as a home office or sunroom.
- Smaller Open Balcony - Enjoy fresh air and a slight sea view.
- Beautiful Garden Views - A tranquil setting to unwind.
- Lifestyle Amenities - Sparkling pool & braai area for socialising.
- Secure Parking - One allocated parking space. Visitors parking...

Features

Interior

Bedrooms	1
Bathrooms	1
Recep. Rooms	2
Furnished	No

Exterior

Carports / Parkings	1
Security	Yes
Pool	Yes

Sizes

Floor Size	110m ²
------------	-------------------

Extras

Security Gate aircon in bedroom aircon in lounge

