



Nicci Francis
0825778711
nicci@therealtyboutique.com

Contact Head Office

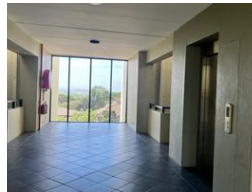
084 6939999

Shop 46 - Protea Mall
1 Lighthouse Road
Umhlanga Rocks

1 Bedroom Apartment For Sale in Umhlanga Ridge



Web Ref RL3403



R950,000

1 1

Monthly Bond Repayment R9,484.61
Calculated over 20 years at 10.5% with no deposit.

Transfer Costs R30,502.00 **Bond Costs** R23,335.00

These calculations are only a guide. Please ask your conveyancer for exact calculations.

Monthly Levy R1,350 **Monthly Rates** R895

One Bedroom For Sale - Umhlanga Ridge

One bedroom apartment for sale in sought after complex in Umhlanga Ridge

Lovley one-bedroom apartment with a recessed kitchen area.

Open plan lounge and dining area . Good space and flow. Small Juliette balcony
One parking bay.
Communal Pool.

24 Hour Security Post

Features

Interior

Bedrooms	1
Bathrooms	1
Kitchens	1
Recep. Rooms	1
Furnished	No

Exterior

Carports / Parkings	1
Security	Yes
Pool	Yes
Views	False

Sizes

Floor Size	45m ²
------------	------------------

Extras

24 Hour Access Secure Parking

