



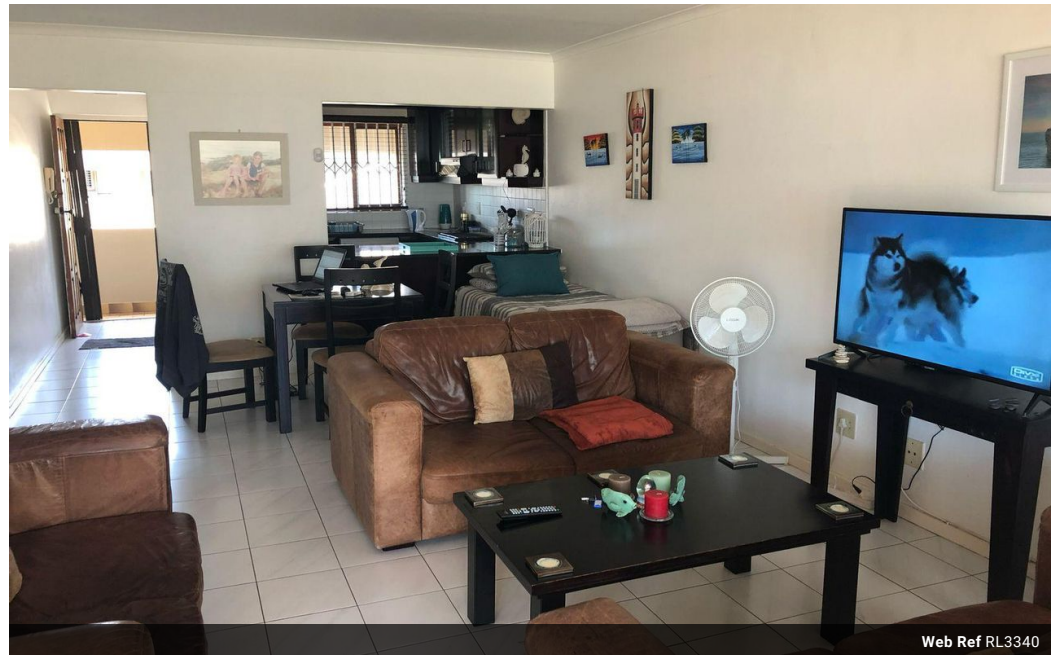
Nicci Francis
0825778711
nicci@therealtyboutique.com

Contact Head Office

084 6939999

Shop 46 - Protea Mall
1 Lighthouse Road
Umhlanga Rocks

2 Bedroom Apartment For Sale in Umhlanga Central



Web Ref RL3340



R1,699,000

2 2 1

Monthly Bond Repayment R17,248.74

Calculated over 20 years at 10.75% with no deposit.

Transfer Costs R54,979.00 **Bond Costs** R30,875.00

These calculations are only a guide. Please ask your conveyancer for exact calculations.

Monthly Levy R2,247 **Monthly Rates** R2,510

2 Bedroom apartment

Live in this spacious but cosy apartment that is close to the beach close to all access roads and schools n the area.

This very homely apartment is in a well run complex that has 1 lock up garage and an open bay parking.

Beautiful pool area to spend some down time.

Make your viewing today

Features

Interior

Bedrooms	2
Bathrooms	2
Kitchens	1
Recep. Rooms	2
Furnished	No

Exterior

Garages	1
Carports / Parkings	1
Security	Yes
Pool	Yes
Views	No

Sizes

Floor Size	33m²
------------	------

Extras

Lock Up Garage Communal Pool Braai Area Fans Built In Cupboards Fitted Stove

