



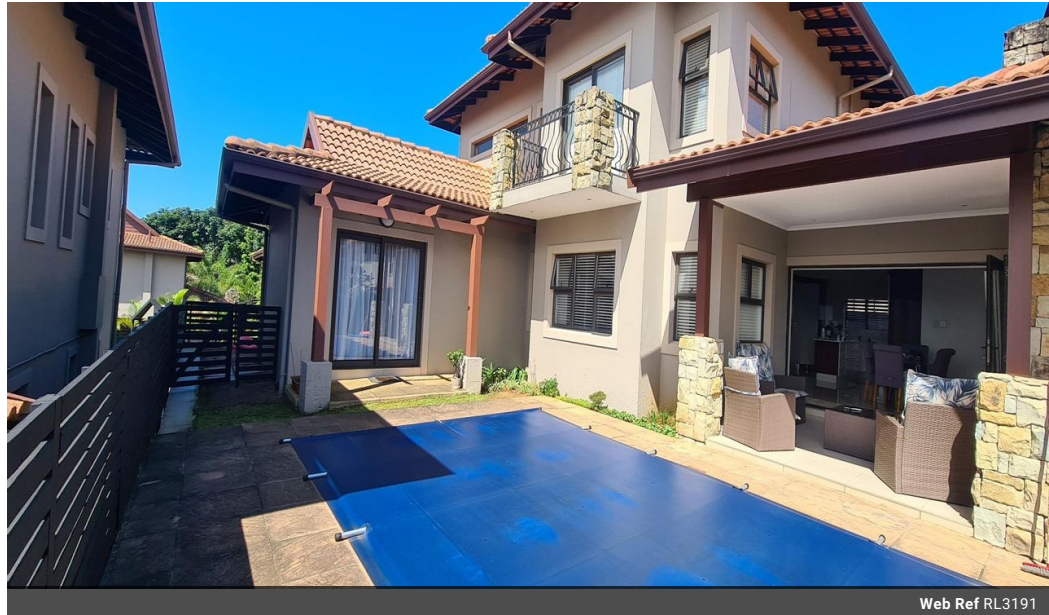
Nicci Francis
0825778711
nicci@therealtyboutique.com

Contact Head Office

084 6939999

Shop 46 - Protea Mall
1 Lighthouse Road
Umhlanga Rocks

4 Bedroom Duplex For Sale in Izinga Ridge



Web Ref RL3191



R5,500,000

4 4 2

Monthly Bond Repayment R56,770.36

Calculated over 20 years at 11% with no deposit.

Transfer Costs R462,807.00 **Bond Costs** R65,785.00

These calculations are only a guide. Please ask your conveyancer for exact calculations.

Monthly Levy R5,194

4 Bedroom Duplex Izinga Estate

4 Beds 4 Baths all ensuite in a gated estate in Izinga Ridge.

Double Volume entrance with beautiful high ceilings, the home is an open plan design, with access directly from the double garage into the entrance hall.

Large lounge and dining room area opening onto a small patio with a heated pool in the garden area. Built in barbeque/braai on the patio

The kitchen is a good well-planned design with a large island work area. It has a scullery and laundry area.

Servants quarters with a bathroom.

Children's play area in the complex.

Make your appointment to view it.

Features

Interior

Bedrooms	4
Bathrooms	4
Kitchens	1
Recep. Rooms	2
Furnished	No

Exterior

Garages	2
Security	Yes
Dom. Accom.	1
Pool	Yes
Views	Yes

Sizes

Floor Size	288m ²
------------	-------------------

Extras

Kiddies Play Area Pool Braai Area Servants Quarters Fully Air conditioned Gated Estate

